

# HIGH PERFORMANCE, CLEANING AND SERVICING SOLUTIONS FOR THE AUTOMOTIVE INDUSTRY.



rozone

[www.rozone.co.uk](http://www.rozone.co.uk)

From Garage Workshops and Local Authority Transport Operations to the Emergency Services and leading National Fleet Companies, we have a specially selected range designed to:

- Improve workshop efficiency
- Safeguard the health and safety of technicians
- Ensure legislative compliance
- Lower costs
- Reduce impact on the environment



### PARTS CLEANING

<b>Manual Parts Washing</b>	
ROwasher	Page 4-7
Jetwash	Page 8
<b>Automotive Parts Washing</b>	
Hotwash	Page 9

### VEHICLE CLEANING

Vehicle Cleaning & Care	Page 10
-------------------------	---------

### SERVICE CLEANING

Brake & Clutch Bleeding	Page 11
-------------------------	---------

## CUSTOMER PROMISE

The Rozone team are committed to giving our customers tailor-made cleaning solutions to suit their requirements. Our service and products will provide you with confidence in excellent cleaning results and, at the same time, reduce your impact on the environment and take the best care of your staff. Our business is founded on care and dependability, providing exceptional product quality, reliability and delivery at competitive prices. We unravel our customers’ problems, by listening and determining the best outcome. We are proud of our knowledge and quickly respond to customer needs, providing a service that can be counted on.

## PARTS CLEANING

### FIND THE RIGHT SOLUTION FOR YOUR WORKSHOP

- Fast, powerful, efficient cleaning with no hazard
- Solvent-free cleaning solutions
- Safety, health & environmental benefits
- Manual and automatic machines

### PARTS CLEANING

<b>Manual Parts Washing</b>	
ROwasher Machines	Page 4-5
ROwasher Fluid	Page 6
ROwasher Microbial Filter Mat & Booster	Page 7
Jetwash	Page 8
<b>Automatic Parts Washing</b>	
Hotwash	Page 9





PARTS CLEANING

ROWASHER

The ROWasher is the most technologically and environmentally advanced manual parts washer on the UK market. It makes parts cleaning a quicker, safer, and more pleasant experience. With a host of “green” credentials, this clever eco-friendly parts washer uses a process called bioremediation to effectively self-recycle its own cleaning solution. This minimises its waste fluid generation bringing huge cost savings to the user and lowering impact on the environment.

- Fast & efficient cleaning & degreasing
- Oil-eating microbe technology reduces waste
- Easily maintained in-house
- No costly service contracts
- Assists compliance, reduces risk assessments
- Benchtop, static, mobile, XL available

ROWasher is the solvent-free, safe alternative to harsh cleaning chemicals. It safeguards the health and safety of employees and assists compliance with ISO14001.



BIOREMEDIATING MANUAL PARTS WASHERS

PARTS CLEANING

01 ROWASHER MACHINE

The system comprises of 3 parts:

- 01 ROWasher parts cleaning machine
- 02 ROWash Degreasing Solution
- 03 ROWasher Microbial Filter Mat

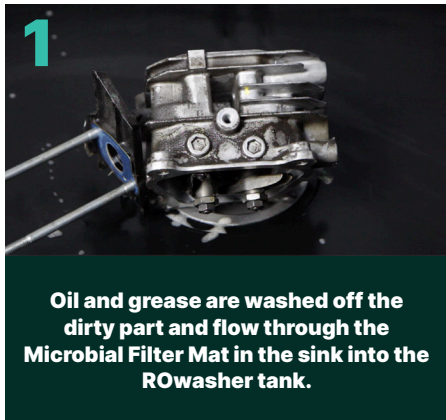
All ROWasher Machines come with the following as standard:

- 60L tank capacity
- 1,000 watt thermostatically controlled heater, heats fluid to 37°- 42°C
- Automatic energy saving mode
- Super capacity pump 15L per minute
- Flow control timer
- Flexible nozzle with highly visible orange tip to control fluid aim
- Powerful adjustable flow rate
- Self-cleaning brush to agitate stubborn dirt
- A 200 micron basket filter in sink tray to trap larger particles
- Safety feature automatic switch off pump and heater if minimum fluid level is reached
- Double-skinned tank, heavy duty MDPE

KEY BENEFITS OF THE ROWASHER

KEY BENEFITS	ENVIRONMENTAL BENEFITS	HEALTH & SAFETY BENEFITS
<p>Solvent free</p> <p>Non-flammable, non-hazardous degreasing fluid</p> <p>Heated to 42°C, better cleaning, more pleasant to use</p> <p>No monthly service contracts</p> <p>Reduced waste disposal costs</p> <p>Energy cost savings with inbuilt Eco-mode</p>	<p>Lower risk to the environment</p> <p>No VOC emissions</p> <p>No “Solvent Emissions Directive”</p> <p>Improved carbon footprint</p> <p>Assists compliance with latest legislation such as ISO14001</p>	<p>No risk to employees</p> <p>Reduced PPE requirement</p> <p>Non-toxic degreasing fluid</p> <p>No vapours</p> <p>Simplified CoSHH reporting</p>

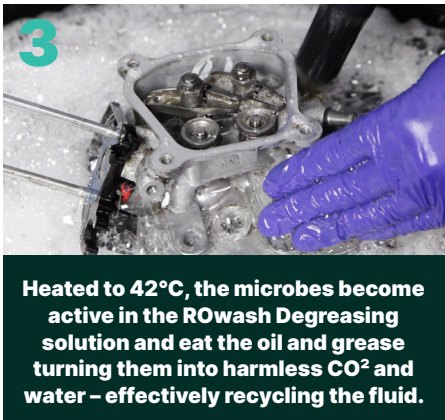
HOW THE ROWASHER WORKS



Oil and grease are washed off the dirty part and flow through the Microbial Filter Mat in the sink into the ROWasher tank.



The Filter Mat is the KEY to the system – it contains 200 million oil-eating microbes and traps particles down to 50 micron.



Heated to 42°C, the microbes become active in the ROWash Degreasing solution and eat the oil and grease turning them into harmless CO² and water – effectively recycling the fluid.

Pictures are for illustrative purposes only. Rozone reserves the right to change specifications at any time.

01 CHOOSE THE ROWASHER TO SUIT THE WAY YOU WORK



ROWASHER STATIC

Our classic design

150kg load capacity

Overall Dimensions:  
W 71cm x L 86cm x H 106cm  
Inside sink:  
W 58cm x L 67cm x D 17cm



ROWASHER MOBILE

Cleaning where you need it

150kg load capacity

Overall Dimensions:  
W 71cm x L 86cm x H 106cm  
Inside sink:  
W 58cm x L 67cm x D 17cm



ROWASHER XL

Extra large sink top for jobs large or small.  
Can be used as a two person work station

200kg load capacity

Overall Dimensions:  
W 97cm x L 126cm x H 109cm  
Inside sink:  
W 80cm x L 101cm x D 19cm

Speak to one of our trusted advisors on 0121 526 8181 to find out more or go to <https://www.rozone.co.uk/rowasher>



## PARTS CLEANING

### 02 ROWASH DEGREASING SOLUTION

ROwash Degreasing Solution is designed to degrease oily parts quickly and effectively. It is a pH neutral mix of emulsifiers and surfactants that has been specially formulated by our Scientists

- Biodegradable oil dispersant & degreaser
- Non-toxic, non-caustic and a non-hazardous
- Contains no known carcinogens
- No flash point
- Releases no vapours or VOCs

ROwash is a degreasing solution that is as powerful as solvent but without the hazards.



## 02 CHOOSE THE ROWASHER SOLUTION FOR THE MATERIAL YOU ARE CLEANING



### ROWASH 03

Excellent for cleaning off motor oil, grease, cutting fluids and hydraulic fluid.

Our ROWash fluid, ROWasher Microbial Filter Mat and Microbial Booster work together to provide the best in bioremediation and can be used in any suitable parts washer

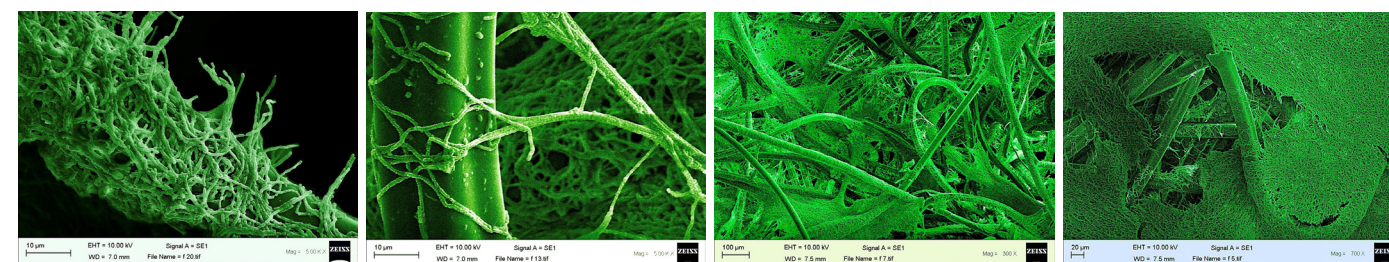


### ROWASH 06

For cleaning specialist metals. Not corrosive on a wide range of yellow and ferrous metals such as aluminium, iron and steel.

## PARTS CLEANING

### 03 ROWASHER MICROBIAL FILTER



The ROWasher Microbial Filter Mat is the key component of the ROWasher parts cleaning system. It is designed to deliver our microbes into the ROWasher system where they break down or “eat” oil and grease washed off dirty parts.

The top white Filter Mat layer is designed to trap large particles of dirt and debris - up to 50 microns. The blue layer provides support for the microbes to breed and grow a microbial reservoir to be released into the ROWasher.

**Change the Microbial Filter Mat every month** to keep the microbe colony healthy and maintain the cleaning performance of ROWasher.

## ROWASHER MICROBIAL BOOSTER

The Microbial Booster is a liquid form of concentrated microbes. Designed to keep microbe activity at optimum performance in your parts washer, it helps fluid stay cleaner for longer.

Our ROWash fluid, ROWasher Microbial Filter Mat and Microbial Booster work together to provide the best in bioremediation and can be used in any suitable parts washer.



## 03 CHOOSE THE MICROBIAL FILTER MAT TO MEET YOUR CLEANING DEMANDS



### MICROBIAL FILTER MAT – STANDARD SINGLE LAYER

One white layer to filter debris and one blue layer housing the microbes



### MICROBIAL FILTER MAT – HEAVY USE MULTI LAYER

Four white layers and one blue layer – white layers designed to be peeled away once a week to remove debris and maintain performance.

PARTS CLEANING

MANUAL JETWASH SYSTEMS

The ROZONE JETWASH offers the same benefits as a manual parts washer but guarantees a faster clean. Its powerful high-pressure spray nozzle is designed for targeted cleaning and removal of stubborn contaminants from blind holes and hard to access areas – significantly reducing component cleaning time and saving on costs.

The Jetwash cabinet features a viewing window with integrated gloves and internal lighting to provide high visibility manual cleaning of parts at temperature without risk to operator safety from heat, vapour or splashes.

The twin filter system ensures fluid stays cleaner for longer between service cycles.

An air gun allows for drying of parts after cleaning.

CHOOSE YOUR JETWASH



AMBIENT

	<b>JET 2P</b>	<b>JET 3P</b>	<b>JET 4P</b>
Dimensions	92 × 66cm	117 × 85cm	70 × 90cm
Load Capacity	70kg	70kg	70kg
Tank Capacity	40L	75L	90L
Door Opening System	Pneumatic	Pneumatic	Pneumatic

HEATED

	<b>JET 2C</b>	<b>JET 3C</b>	<b>JET 4C</b>
Dimensions	95 × 66cm	120 × 85cm	145 × 95cm
Load Capacity	70kg	70kg	70kg
Tank Capacity	40L	75L	90L
Door Opening System	Single Phase	Single Phase	Single Phase

Speak to one of our trusted advisors on 0121 526 8181 to find out more or to arrange a demonstration at our Midlands site. View product <https://www.rozone.co.uk/partswashers/hotwasher.html>

PARTS CLEANING

AUTOMATIC AQUEOUS SPRAY WASH SYSTEM

Looking for a faster, more powerful clean? Multiple components to wash? Designed to degrease a number of parts in a short space of time or clean components with hard to reach areas. Our stainless steel, aqueous spray wash machines provide automated cleaning that leaves technicians free to work on other tasks, increasing workshop productivity and saving on costs.

- Multiple components washed in one cycle
- Non-hazardous degreasing
- Minimal Operator involvement
- Double spray bar for faster total clean
- Sizes to suit any cleaning requirement

The combined action of temperature, pressure and chemical action allows for the removal of oils, fats, greases as well as incrustations of any kind due to mechanical use.

Hot air accumulated during the wash cycle results in rapid drying of the parts, providing an entirely automatic, cost effective and safe cleaning process.

Oil skimmer ensures fluid stays cleaner for longer between service cycles.

HOTWASH LOW FOAM

Our Aqueous Spray Wash systems use our specially designed solution - Hotwash Low Foam. Formulated by our in-house chemists and manufactured at our UK plant, Hotwash Low Foam is a rust inhibited, quick break aqueous cleaning and degreasing solution that is non-emulsifiable, low foaming and no hazard to painted surfaces, acrylics, non-ferrous metals and soft sealants. It is solvent free, VOC free and separator friendly.

All machines come with the following as standard:

- Motorised basket
- Temperature 0-120°C
- Timer 0-30min
- Electric/Phase 220-380v / 3
- Safety shut-off
- Low fluid protection

CHOOSE YOUR HOTWASH



R 60M

92 × 86cm  
100 kg load  
60L tank  
Single Phase

R 80M

112 × 105cm  
100 kg load  
130L tank  
Single Phase

R 60

92 × 86cm  
100 kg load  
60L tank  
3 Phase

R 80

112 × 105cm  
100 kg load  
130L tank  
3 Phase

R 100

147 × 175cm  
200 kg load  
210L tank  
3 Phase

R 120

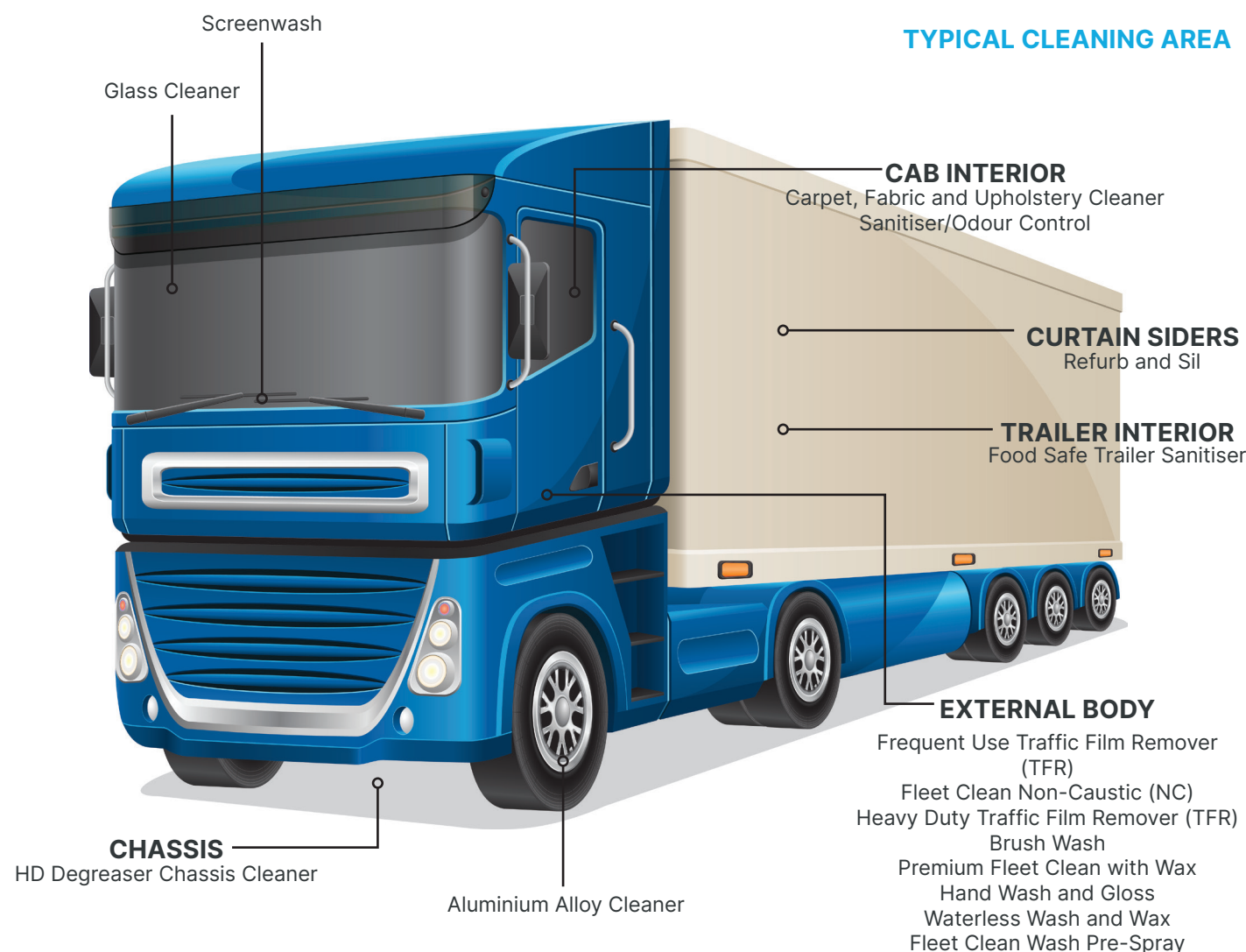
166 × 206cm  
300 kg load  
270L tank  
3 Phase

Speak to one of our trusted advisors on 0121 526 8181 to find out more or to arrange a demonstration at our Midlands site. View product <https://www.rozone.co.uk/partswashers/hotwasher.html>



## VEHICLE CLEANING

## VEHICLE CLEANING & CARE



Maintaining a clean fleet is as important to your company image as your logo.

We offer an excellent range of TFRs for every application.

- Traffic Film Removers that are non-caustic and can be applied manually, with a pressure washer or via a Brushwash system with no risk to paintwork.

We have vehicle surface cleaners and maintenance products to compliment our TFR range

- Heavy Duty Degreaser for chassis cleaning
- Screenwash
- Sil – a non -tainting silicone lubricant for vehicle curtain runners
- Refurb – a vehicle curtain cleaner that removes resin lines, ingrained dirt and strap marks
- Aluminium Alloy Cleaner for tyres - effective against brake dust, oil and traffic film

Our Interior Vehicle Finishing and Valeting Range includes:

- Glass Cleaner in a refillable trigger spray - a cost effective alternative to aerosol glass cleaner
- Sanitiser/Odour Control for disinfection and odour neutralising in cabs and vehicle interiors.
- Food Safe Trailer Sanitiser gives biocidal control in food trailer interiors
- Carpet, Fabric and Upholstery Cleaner loosens ingrained stains and marks quickly

Speak to one of our trusted advisors on 0121 526 8181 to find out more or go to <https://www.rozone.co.uk/chemical-cleaning-restoration/industrial-cleaning/vehicle.html>

## SERVICE EQUIPMENT

## BRAKE AND CLUTCH BLEEDING

Rozone is the UK partner of Romess Brake & Clutch Bleeders. Approved by the likes of Mercedes, BMW, VW, Ford, Volvo, and Renault and suitable for motorbikes, cars and trucks, our Brake Bleeders enable technicians to fulfil brake servicing tasks faster and more efficiently, saving both time and money.

Our range includes brake bleeding systems for both DOT and Pentosin. Romess have thoughtfully created their Pentosin Brake Bleeders in green, giving them different fittings to the DOT Brake Bleeders so there is no risk of cross contamination in Service Workshops that are dealing with both fluids.

The Romess range also cleverly includes units specially designed for holding 30L & 60L cans of fluid meaning no risks from decanting, saving on fill time and disposing of packaging waste – a sign of the innovation that makes Romess products the market leading solutions for Technicians looking for ease of use and efficiency.

Official approval and recommendations from Mercedes, BMW, Ford, Volvo, and Renault.

Bleed, flush and fill brake and clutch systems.

- Fast, simple 5 minute operation
- Suitable for motorbikes, cars, and commercial vehicles
- On wheels for easy mobility
- No compressed air
- Large capacity tank reduces plastic packaging waste
- Refill without disconnection from vehicle
- Automatic shut off when minimum fluid level of 1.5L reached
- No risk of air getting into braking system
- Supplied with waste fluid bottle and adaptor
- 3.5m flexible hose with long reach



**S16**

For DOT 4 brake fluid

17L tank capacity

Pressure 0.5 to 3.5 bar



**SE14**

For DOT 4 brake fluid

15L tank capacity

Pressure 0.5 to 3.5 bar

Low level fluid buzzer



**S15**

For DOT 4 brake fluid

15L tank capacity

Pressure 0.5 to 3.5 bar

Fluid level indicator –  
traffic light system  
Green = > 5L



**SE30/60 A10 ROTWIN**

For DOT 4 brake fluid

Designed for 30 & 60L  
brake fluid containers

Pressure 0.5 to 3.5 bar

Low fluid indicated by  
red light



**SE 5 HY 2**

For Pentosin brake fluid

Designed for 20L brake  
fluid container

Pressure 0.5 to 3.5 bar

Automatic shut off  
when minimum fluid  
level of 1.5L reached

Speak to one of our trusted advisors on 0121 526 8181 to find out more or go to <https://www.rozone.co.uk/service-equipment/brake-bleeding.html>

## REDUCE THE USE OF HARSH CHEMICALS

In today's increasingly legislative environment, there is a demand for cleaning, pollution control and other innovative technologies that benefit employees, society and the environment – at the same time delivering a reduction in operating costs and improving efficiency.

Our aim with the ROWasher is to help companies reduce the use of harsh chemicals in their cleaning processes, safeguarding the health and safety of staff and customers, whilst lowering their impact on the environment.

The demand for our range of bioremediating parts washers has developed significantly since we began in 1996 and we are proud to work with a wide range of customers including Aerospace, Automotive, Engineering and Manufacturing, Defence, Cycle, Plant Hire, Government and Municipal and many more.



## INTERNATIONAL PARTNERS

We have also built up a significant export business, resulting in our UK developed and manufactured technologies reaching a global audience. We work with international distributors, if you would like to become one, or talk to us about own label branding please call our international team on +44 (0)121 526 8181.

**For more information:**

**Visit:** [www.rozone.co.uk](http://www.rozone.co.uk)

**Email:** [info@rozone.co.uk](mailto:info@rozone.co.uk)

**Call:** +44 (0) 121 526 8181

